



# YOUR INFORMATION KIT

“ *My soul yearns for a place it intrinsically knows to be home. A place of peace, where all things are **balanced and pure**. A place of **astounding natural beauty**. A place of **safety**. A place of **comfort**. A place where wealth is an **essence** and not a currency. A place of **community**. A place of **love**. A place where I am part of something so much bigger than me, and where **I am never alone**. There is such a place...*

*It's called Monwana.*

”

## About

*A re-imagined luxury safari experience*

Monwana is a luxurious lodge, which promises an utterly customised private safari experience in Africa.

## UNIQUE SELLING POINTS



Big 5 Greater Kruger Park safari



Sustainable eco-lodge



Active waterhole and a dry river bed in front of the lodge



Spa



Food & Wine



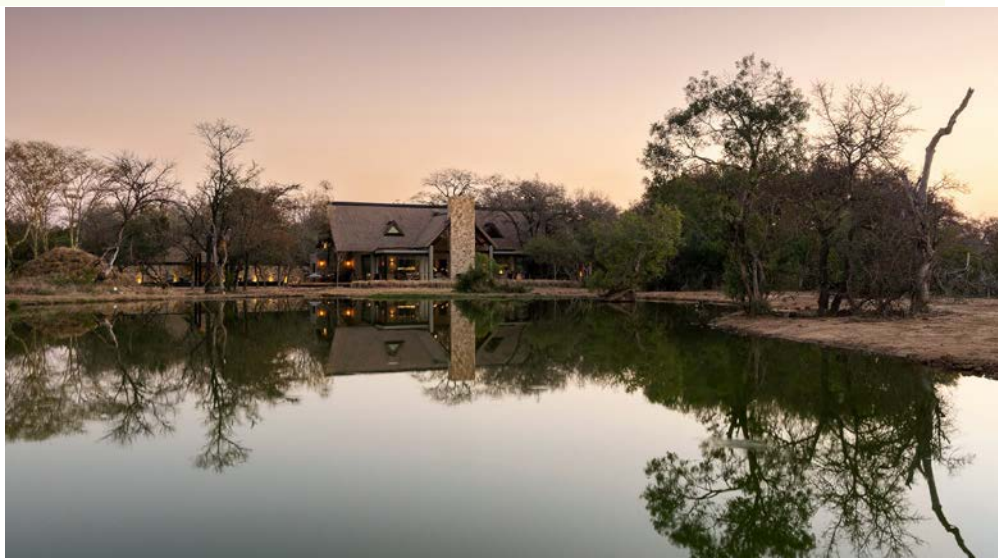
Monwana Villa – exclusive use for families or friends



Daily flights in and out of Hoedspruit Eastgate Airport



Transfers approx. 45 min by road from and to Hoedspruit Airport



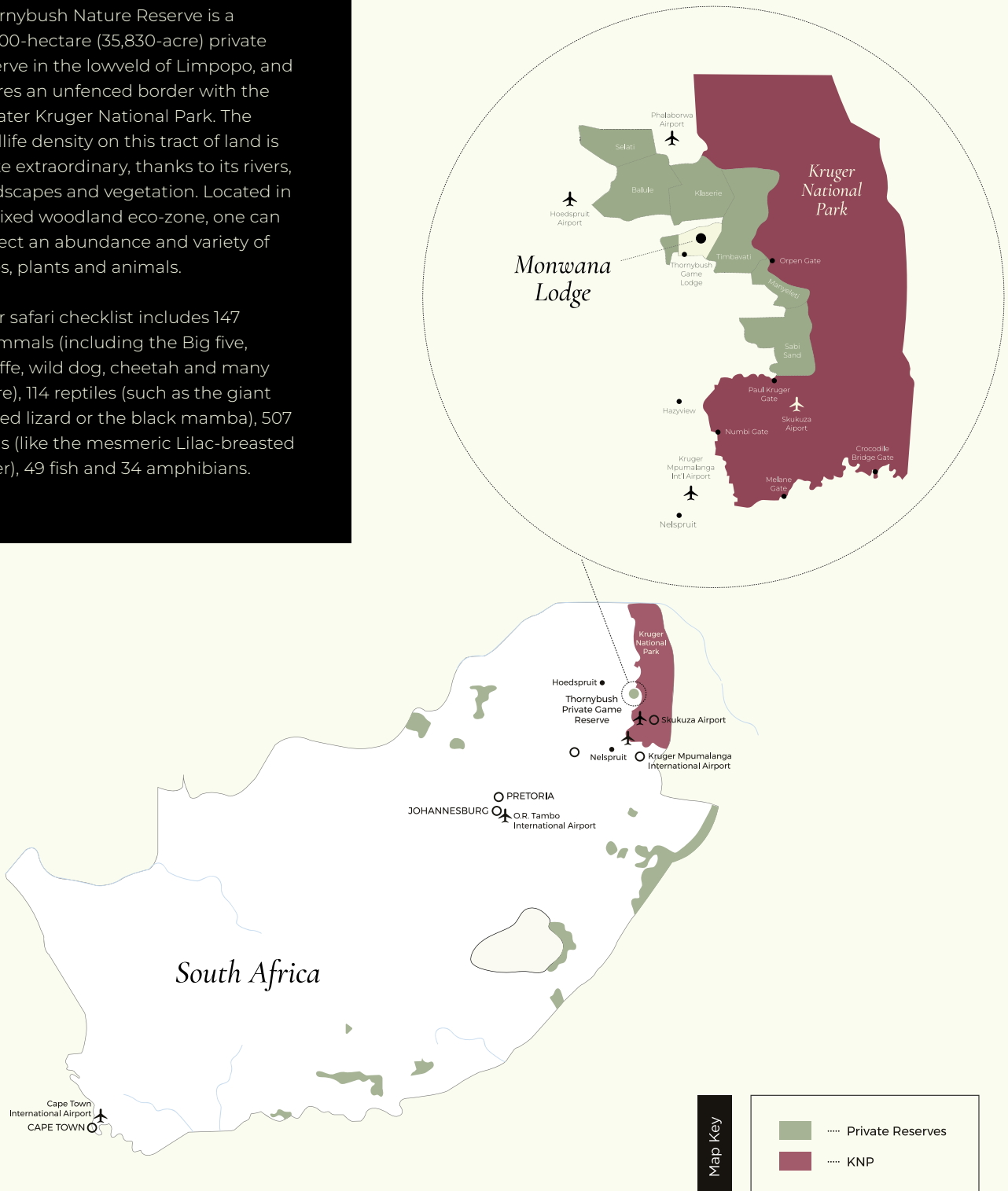
# Location

Monwana is located in a private reserve in the Limpopo Province of South Africa, and is part of the Greater Kruger National Park.

## The Reserve

Thornybush Nature Reserve is a 14,500-hectare (35,830-acre) private reserve in the lowveld of Limpopo, and shares an unfenced border with the Greater Kruger National Park. The wildlife density on this tract of land is quite extraordinary, thanks to its rivers, landscapes and vegetation. Located in a mixed woodland eco-zone, one can expect an abundance and variety of trees, plants and animals.

Your safari checklist includes 147 mammals (including the Big five, giraffe, wild dog, cheetah and many more), 114 reptiles (such as the giant plated lizard or the black mamba), 507 birds (like the mesmeric Lilac-breasted roller), 49 fish and 34 amphibians.





# Your Lodge

We've designed a lodge to be lived in, where the outside is invited in. Double volume vertical space, massive cathedral windows and doors that open wide mean that you are part of the bush wherever you may be.

*The lodge's facilities have been carefully designed to allow for sociable spaces and privacy in equal measure.*



Lounge



Bar



Wine  
Cellar



Wraparound  
Wooden Deck



Lap Pool  
(12 metres)



Gym



Spa



Safari  
Boutique



## Lodge Layout



# Your Accommodation

With never more than 8 rooms occupied, with a maximum of 16 guests, Monwana's environment is always intimate and private.

## ROOM TYPES

Each of the rooms occupies its own unique space in the African bush, where you will feel as if it's just you in this vast natural habitat. We know how magical the atmosphere is, and have created spaces for you to enjoy it. Recline on the deck, take a shower in the open or cool off in your private plunge pool.

Choose between **Suites**, **Savannah Residences** (which may be converted to Family Suites for 2 adults and 2 children sharing), or **Woodland Residences**. If you would prefer your own exclusive getaway serviced by a dedicated team, then the private **Monwana Villa** is for you.

## AMENITIES



Air Conditioner



In-room Dining



Plunge Pool



Ceiling Fan



Mini Bar



Safe



Hairdryer



Outdoor Shower



Wi-Fi



Lounge convertible to Bedroom (savannah only)



Lounge (woodland & villa only)



Kitchenette (villa only)

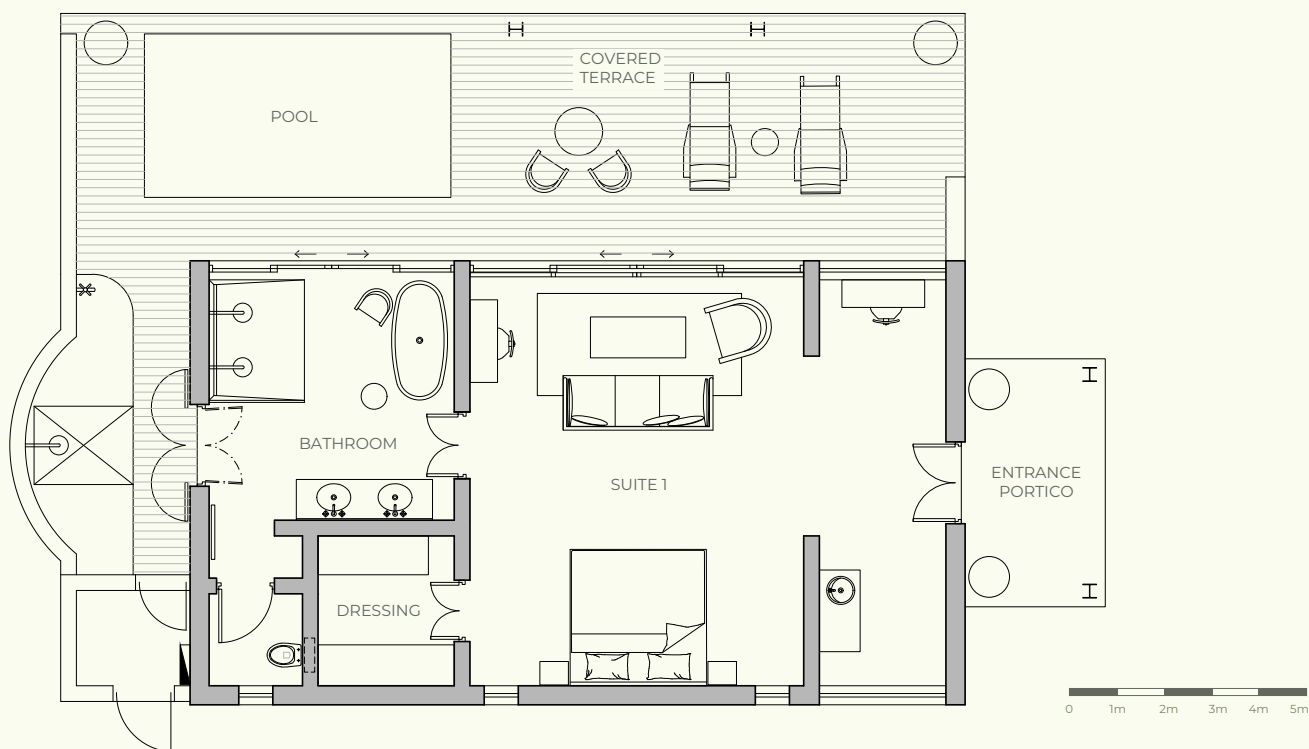


Pool (villa only)



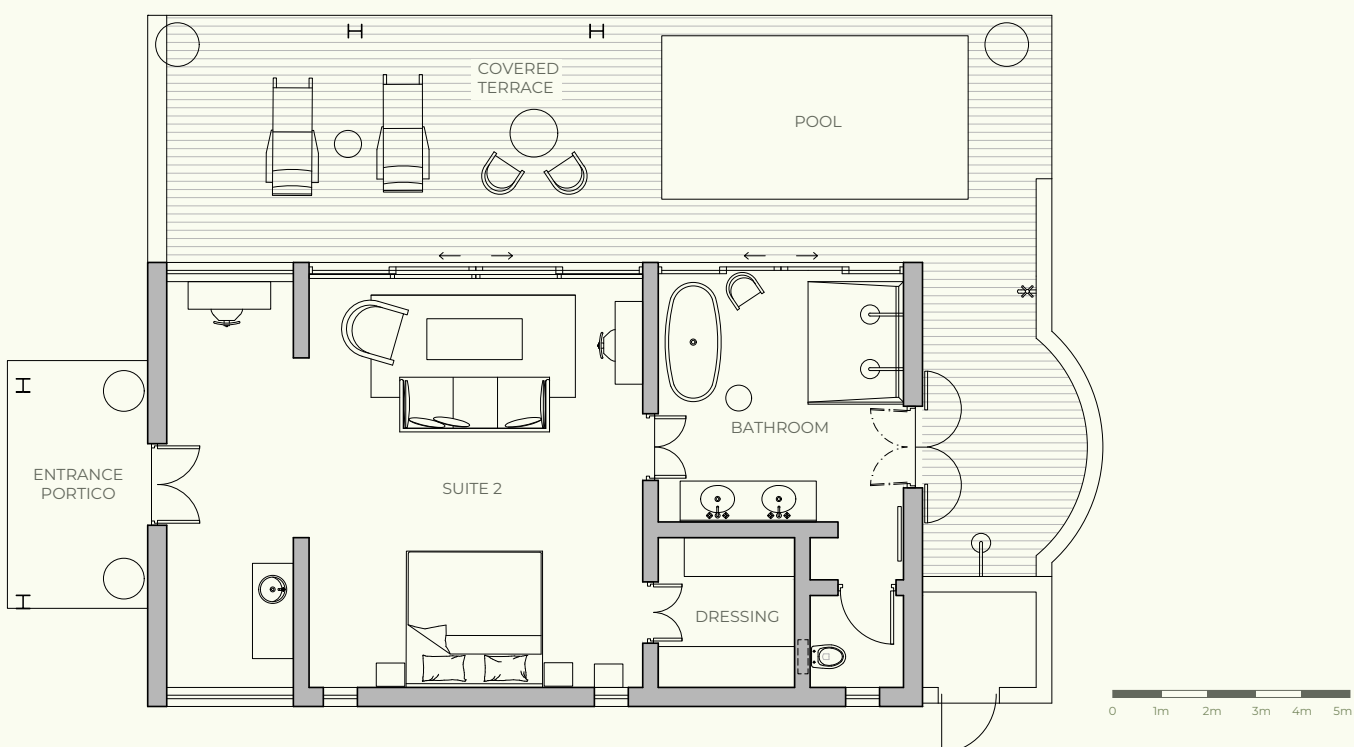
## Suite 1

74m<sup>2</sup> INTERNAL SUITE AREA | 16m<sup>2</sup> COVERED TERRACE | 25m<sup>2</sup> OPEN DECK AREA



## Suite 2

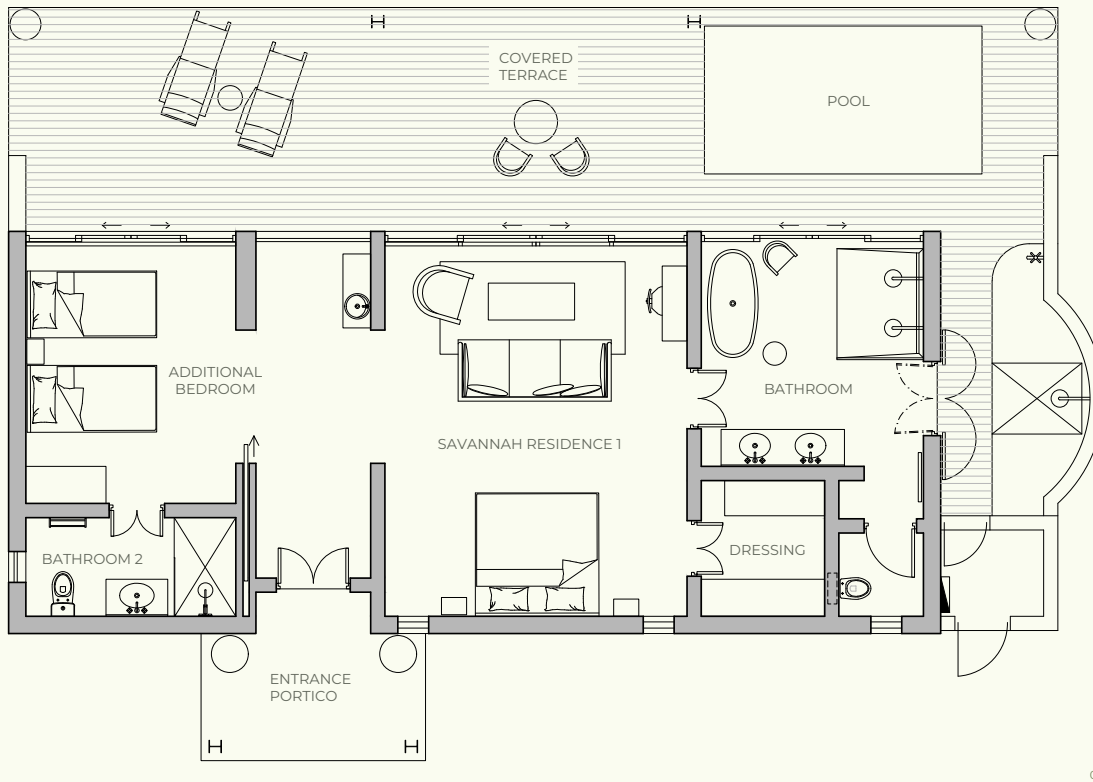
74m<sup>2</sup> INTERNAL SUITE AREA | 16m<sup>2</sup> COVERED TERRACE | 25m<sup>2</sup> OPEN DECK AREA



## Savannah Residence 1\*

98m<sup>2</sup> INTERNAL SUITE AREA | 20m<sup>2</sup> COVERED TERRACE  
35m<sup>2</sup> OPEN DECK AREA

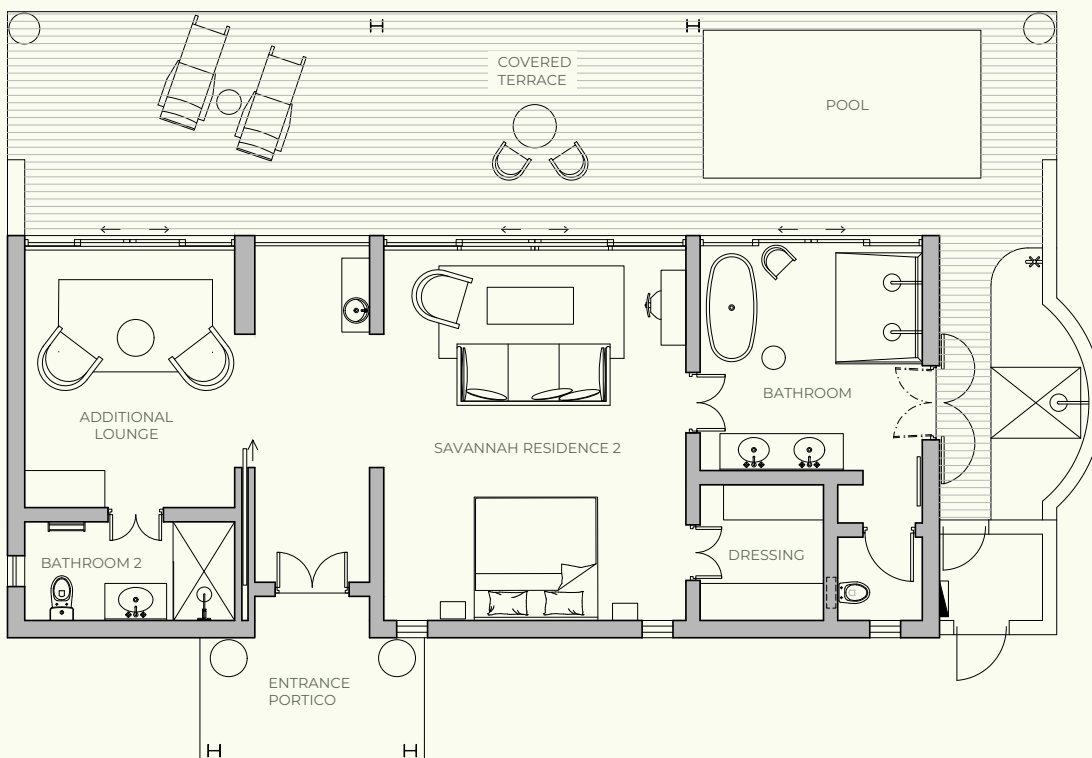
\* with 2nd Bedroom



## Savannah Residence 2\*

98m<sup>2</sup> INTERNAL SUITE AREA | 20m<sup>2</sup> COVERED TERRACE  
35m<sup>2</sup> OPEN DECK AREA

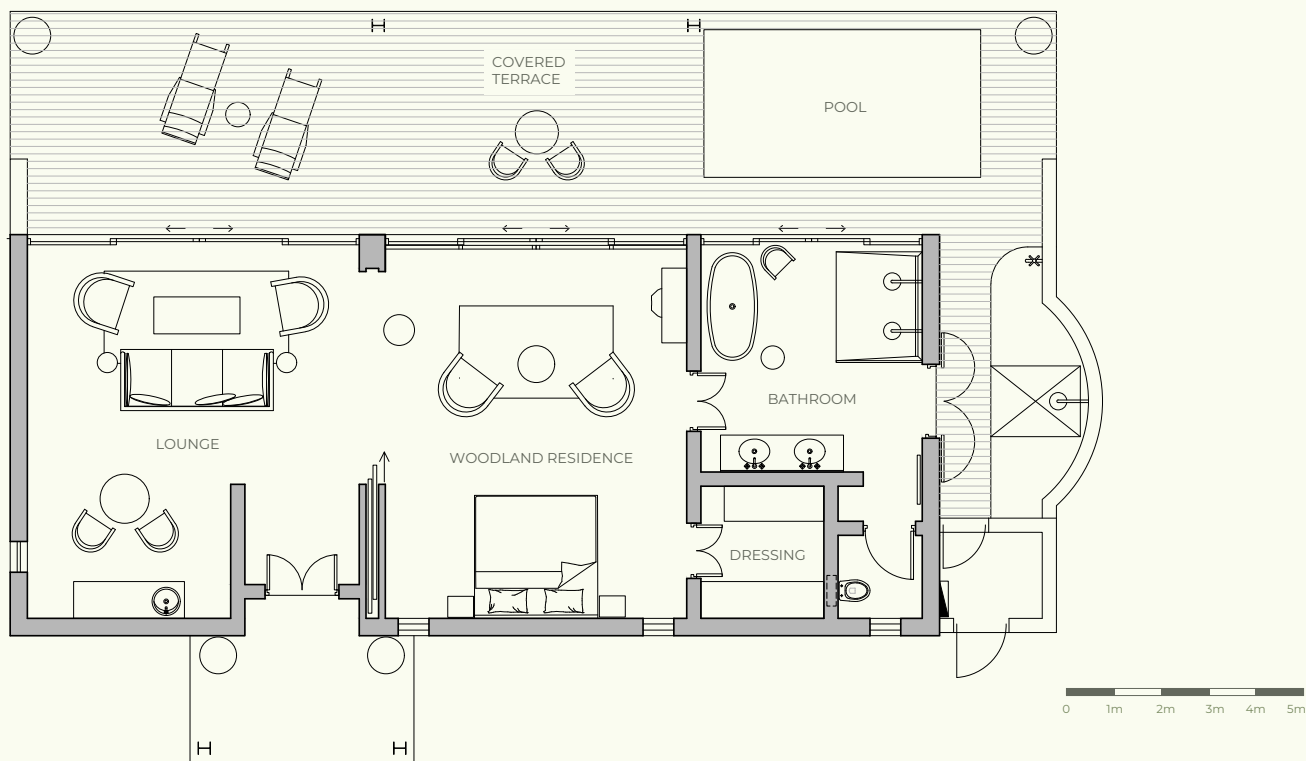
\* with separate Lounge





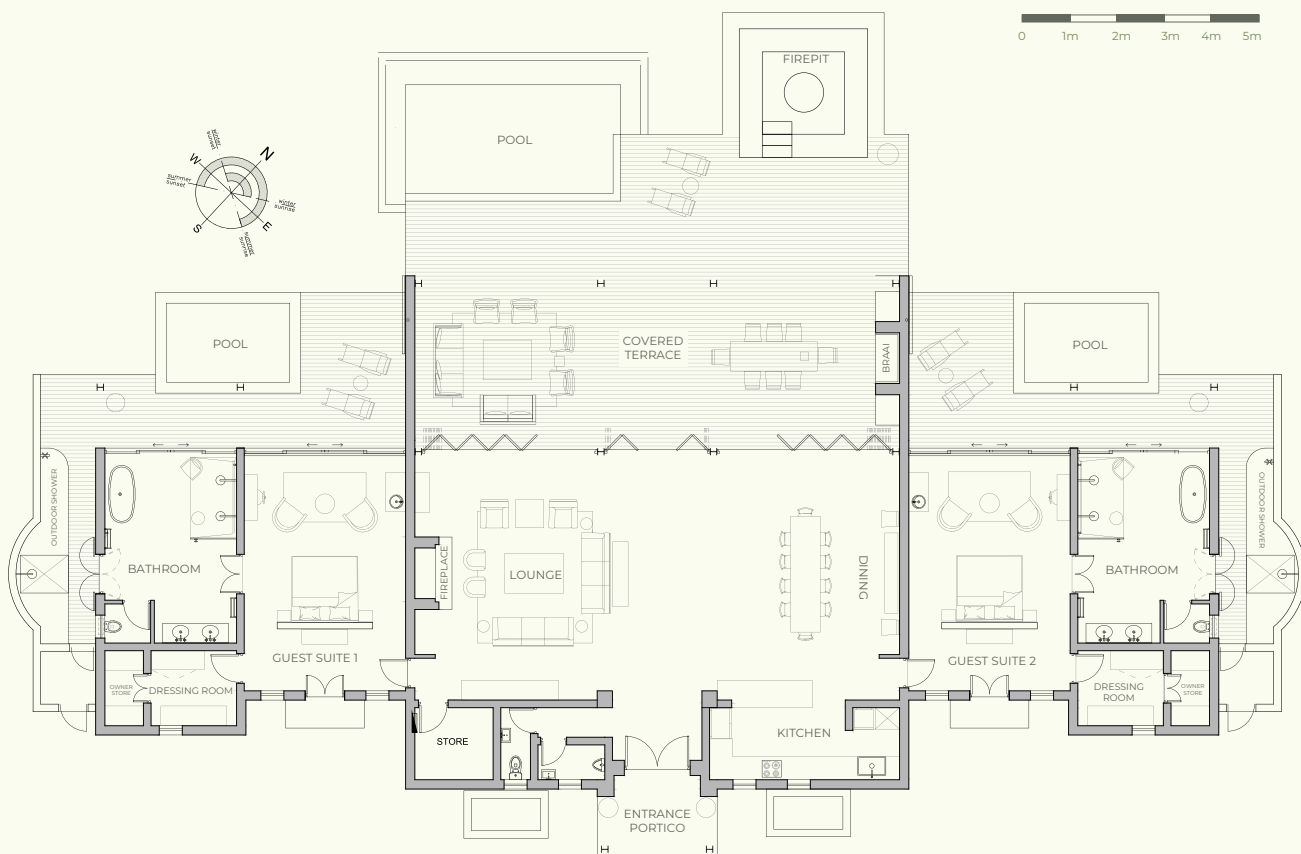
## Woodland Residence

98m<sup>2</sup> INTERNAL SUITE AREA | 20m<sup>2</sup> COVERED TERRACE  
35m<sup>2</sup> OPEN DECK AREA



## Monwana Villa

310m<sup>2</sup> INTERNAL VILLA AREA | 80m<sup>2</sup> COVERED ENTERTAINMENT AREA  
130m<sup>2</sup> OPEN DECK AREA



# Your Spa

*"I go to nature to be soothed, healed and have my senses put in order"* – [John Burroughs]

The Spa at Monwana is the very essence of nature and tranquillity. A fresh breeze from the bush blows across the pond through sheer linen curtains; the sound of birdsong is a sweet accent to running water; and the sensual fragrance and texture of omumbiri, baobab and kigelia gives expression to Africa's regenerative natural ingredients.

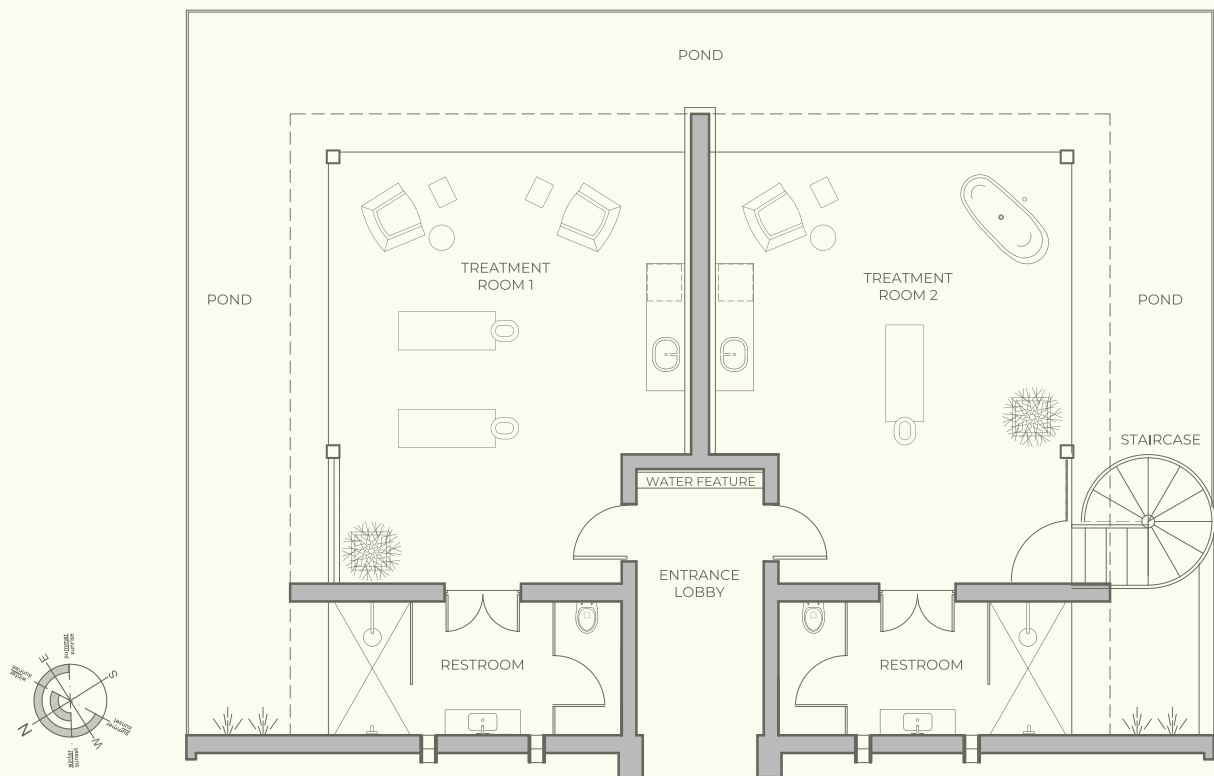
Walls of glass let the outside in, and the combination of light, tarnished copper and timber set a tone of peace. The enchanting presence of water is felt everywhere – be that in the wrap-around reflection pool, cascading over metal, or in a beautiful copper slipper bath with its own view of the surrounding bush.

Each of the treatment rooms is an apothecary's curiosity cabinet of spices, tinctures and artefacts collected from the wild. TheraNaka™ and TheraVine™ are Monwana's body and skincare range of choice, offering the best quality product preparations that are responsibly sourced and formulated, and developed to take you on a journey that will open your eyes to the beauty and wonder of Africa.

## AT A GLANCE

- 2 treatment rooms (for individual or couples treatments)
- 100% natural products
- Massage, body and facial therapies
- Bath rituals and tea experiences
- Signature treatments for children

Spa





# Your Experience

You can expect an utterly customised luxury safari experience at Monwana.

*On the menu for your pleasure are...*



Game drives in open safari vehicles with qualified guide and tracker (2 per day)



Guided bush walks



Surprise safari stops



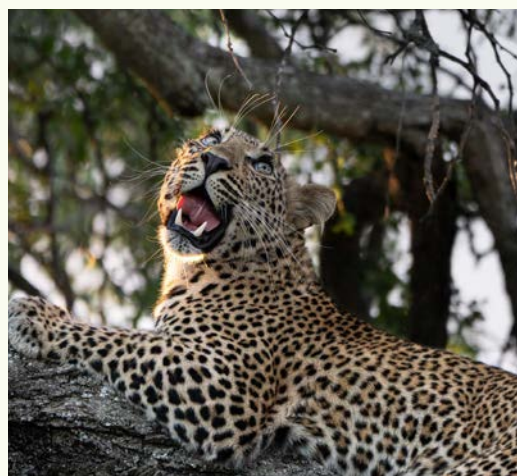
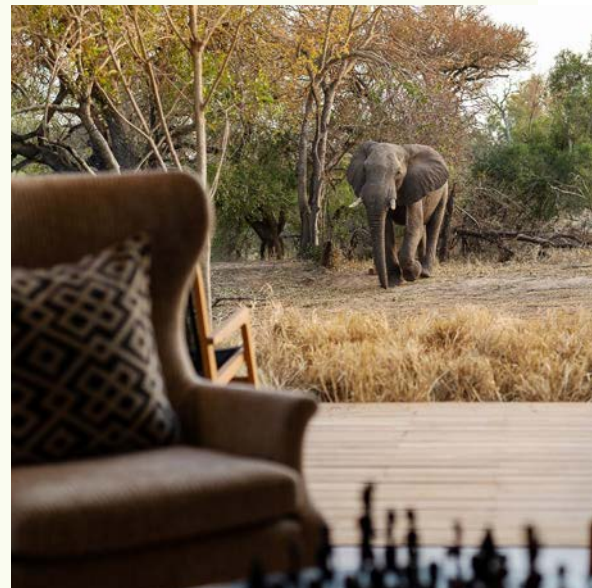
Health & wellness in the spa or gym



Exceptional dining in beautiful locations – no two locations are ever the same



Wine tasting in the amply stocked cellar



# Travel Options

## SCHEDULED FLIGHTS

*There are daily flights in and out of Hoedspruit Eastgate Airport (HDS)*

From/to Johannesburg (OR Tambo International Airport [ORTIA]) | 55 minutes  
~ Twice a day with Airlink, and once a day with Cemair.

From/to Cape Town (Cape Town International Airport [CTIA]) | 2 hours and 30 minutes  
~ Once a day with Airlink, and once a day with Cemair.

Transfers (approximately 45 minutes by road) can be arranged on your behalf from Hoedspruit Airport to the Reserve. Scheduled charter flights taking you directly into one of the Thornybush Nature Reserve Airstrips can be booked through our reservations department.

## SELF DRIVE

Johannesburg to Thornybush Game Reserve	470km	6 hours
Nelspruit to Thornybush Game Reserve	180km	3.5 hours
Hoedspruit to Thornybush Game Reserve	35km	45 minutes

